

Upgrade Guidance For FI8908W

Warning: Please make sure that your camera is FI8908W, not FI8918W.

The firmware upgrade is only for FI8908W.If you upgrade this firmware wrongly for FI8918W.Your camera will be dead and need send to repair!!

1、 Please check your current firmware version of your camera.

The new software we are going to update is:

Firmware version: 11.14.2.28

Web UI version: 2.4.8.15

Caution:

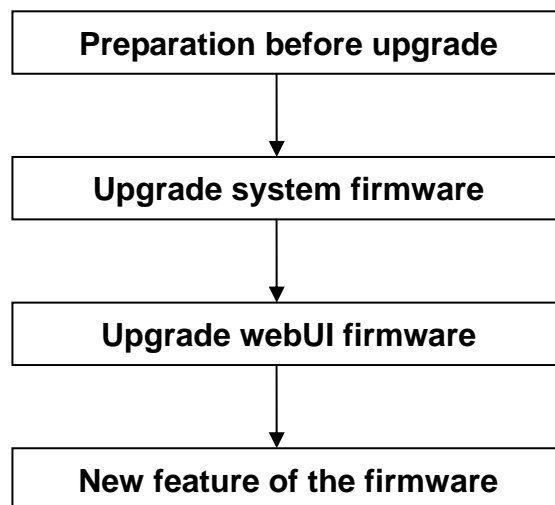
If your camera's firmware version is 11.14.2.17&2.4.8.14 or 11.14.2.26 & 2.4.8.14 or 11.14.1.46&2.4.8.12 now, you can upgrade it to the new version. If your camera has other versions of firmware (not mentioned above), please contact tech@foscam.com and confirm with our engineers whether your camera can upgrade or not.

Please upgrade the firmware carefully or it will crash your camera.

Please check if Ir_coms_11_14_2_28.bin is 1,472KB,
2.4.8.15.bin is 777KB before upgrade.

If it is, you can upgrade, if not, please download the firmware again until it fits the exact size.

Or it may crash your camera!!!



2、 Preparation before upgrade.

1) Download the upgrade package and the new IP Camera Tool.

2) Please check if the version of your IP camera tool is 0.0.7.6, activeX version is 0.0.0.36.If it is; you can skip this install step. If not, Please uninstall the old IP camera tool and install the new one. Then restart your computer. Please check if the tool has the right version after doing that.

Click right mouse and choose about IP camera tool. The correct version is 0.0.7.6, ActiveX control version is 0.0.0.36.

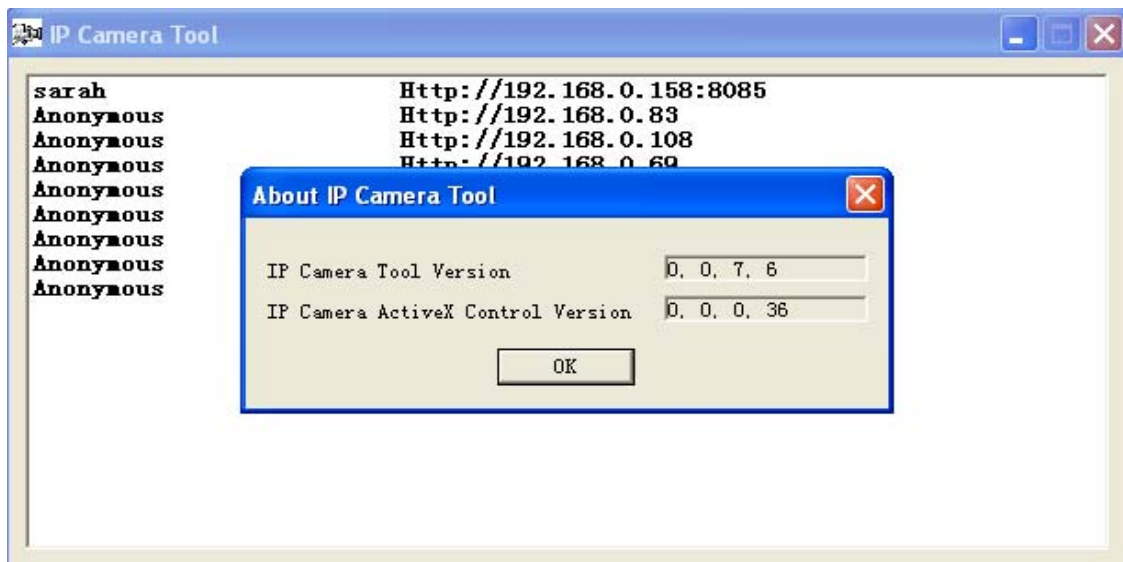


Figure 1.0

3) Plug the network cable and power.

Note: Please do not upgrade the camera when it works on wireless.

Plug the network cable and do the upgrade.

Once done, then upgrade the system firmware first, followed by WebUI.

3、Upgrade system firmware.

Click the right mouse on the ip in the IP camera tool and choose “**Upgrade Firmware**”. To see the screen below.

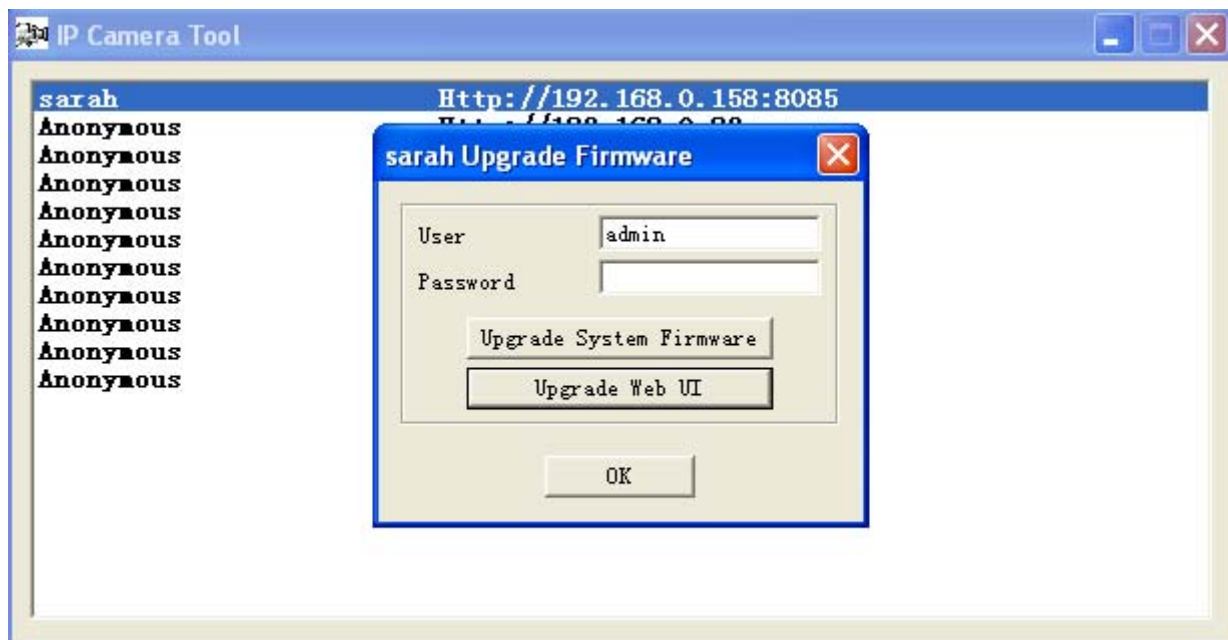


Figure 1.1

Click **Upgrade System Firmware**, and then choose [lr_coms_11_14_2_28.bin](#) to upgrade.

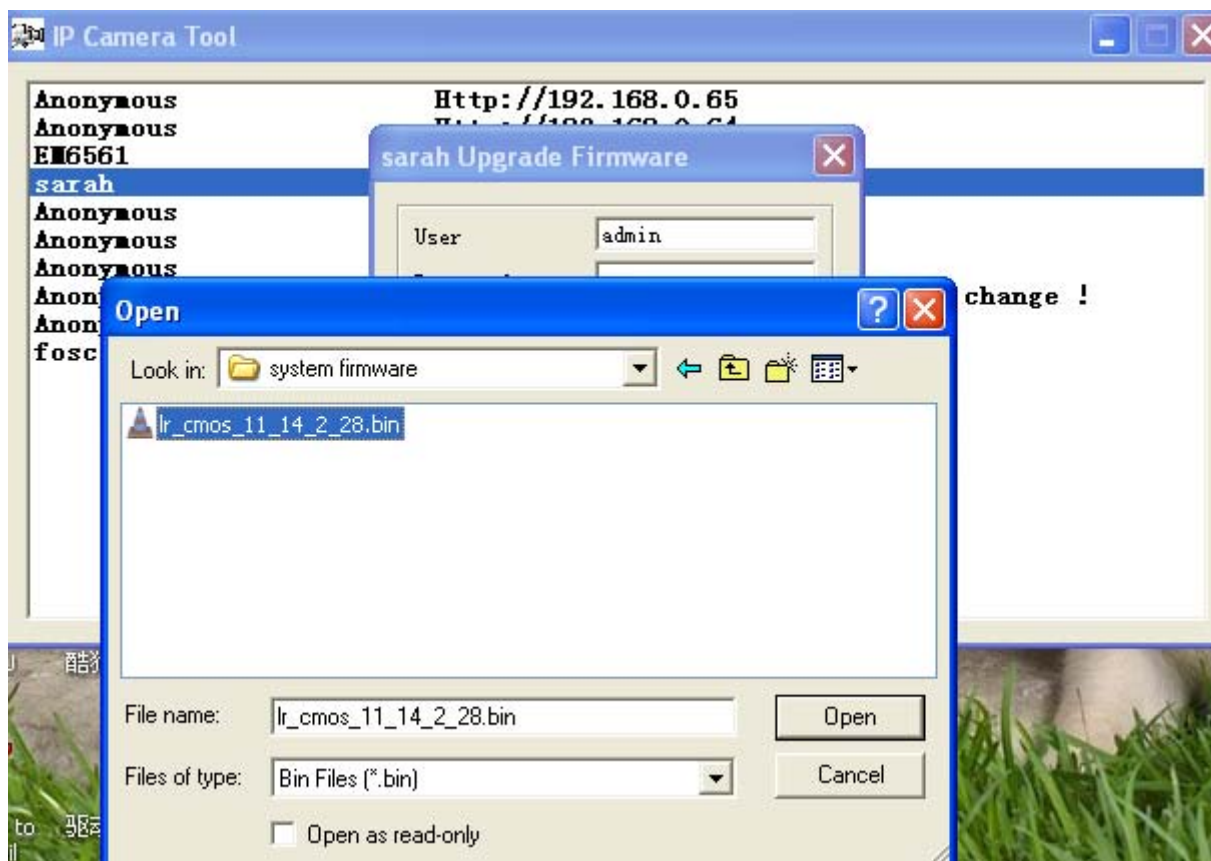


Figure 1.2

Caution: Don't powerdown during the upgrade process.

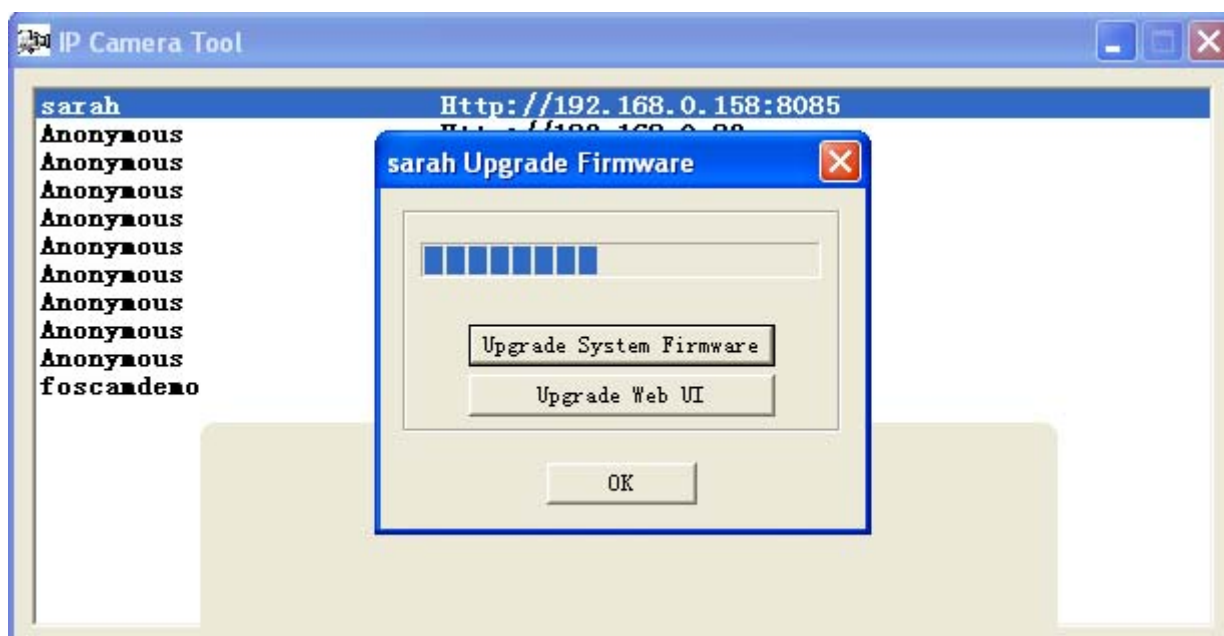


Figure 1.3

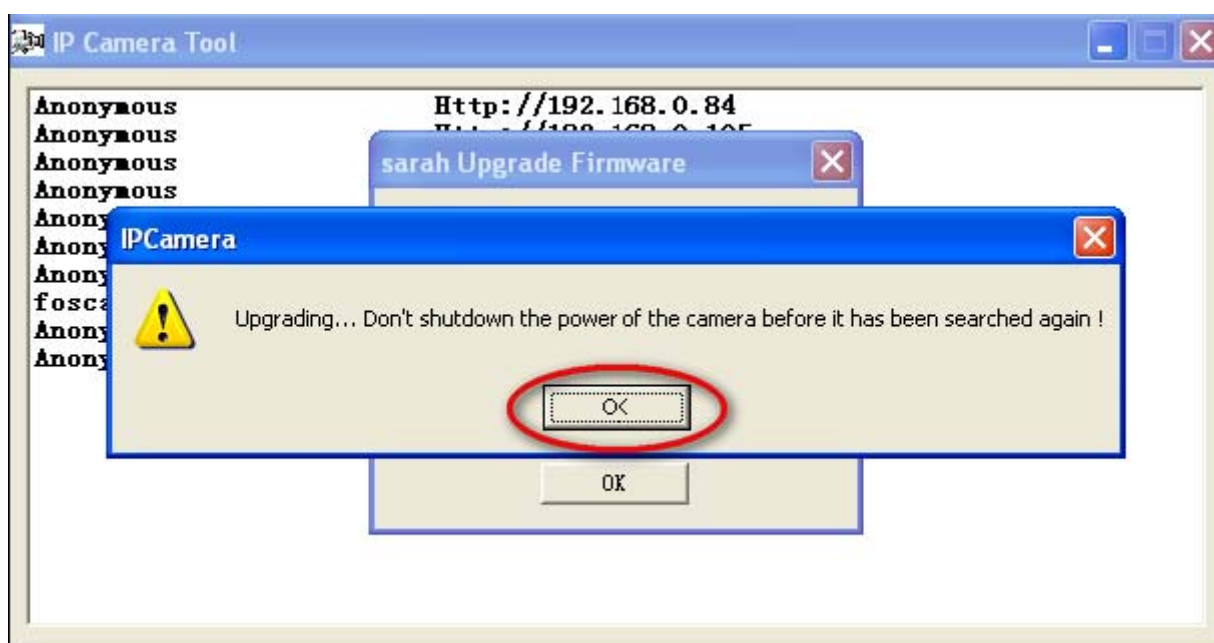


Figure 1.4

Do nothing until the IP camera tool display the camera again.

4、Upgrade Web UI firmware.

Wait about 60 seconds. You may find the following information in the IP camera tool after the camera reboot. "Web UI does not exist, dbclick to upgrade" or it still show the camera's IP address (Figure 1.5).

Click right mouse on the ip and choose **Upgrade Firmware**.

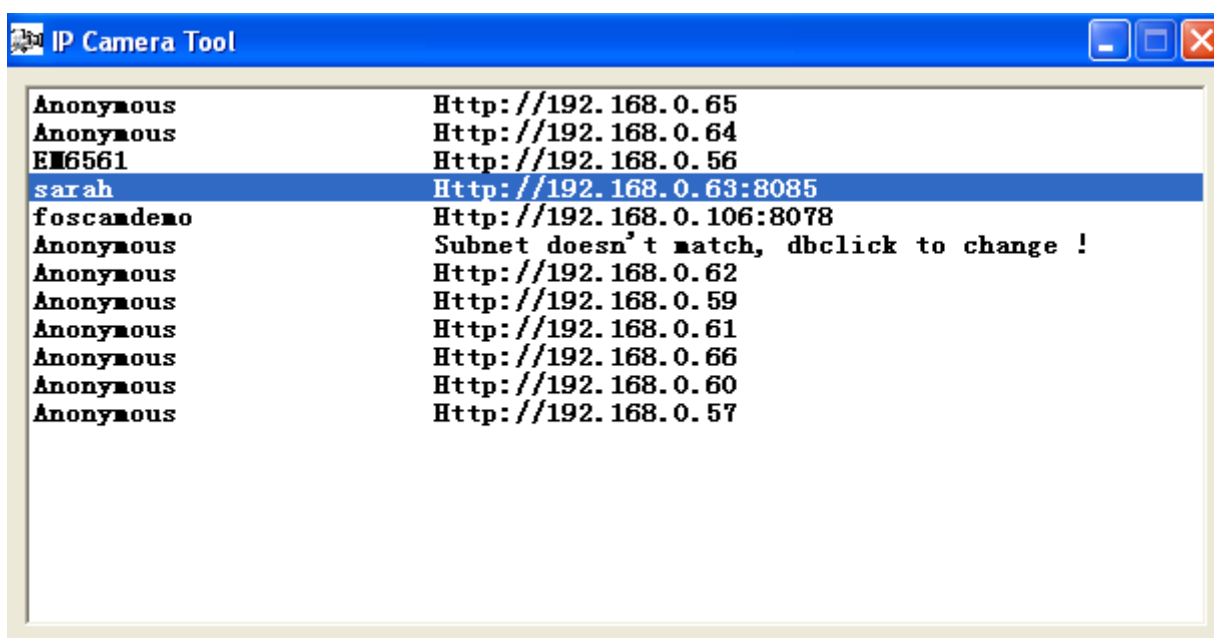


Figure 1.5

Choose **"Upgrade Web UI"**. Figure 1.6

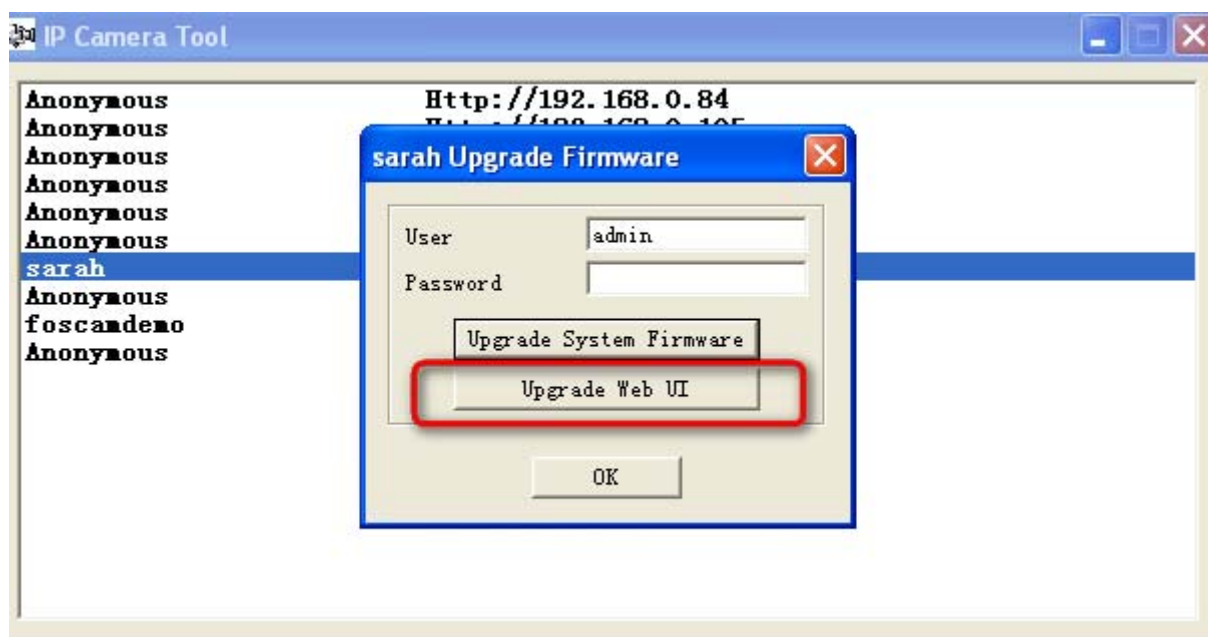


Figure 1.6

Then choose **2.4.8.15.bin** to upgrade.

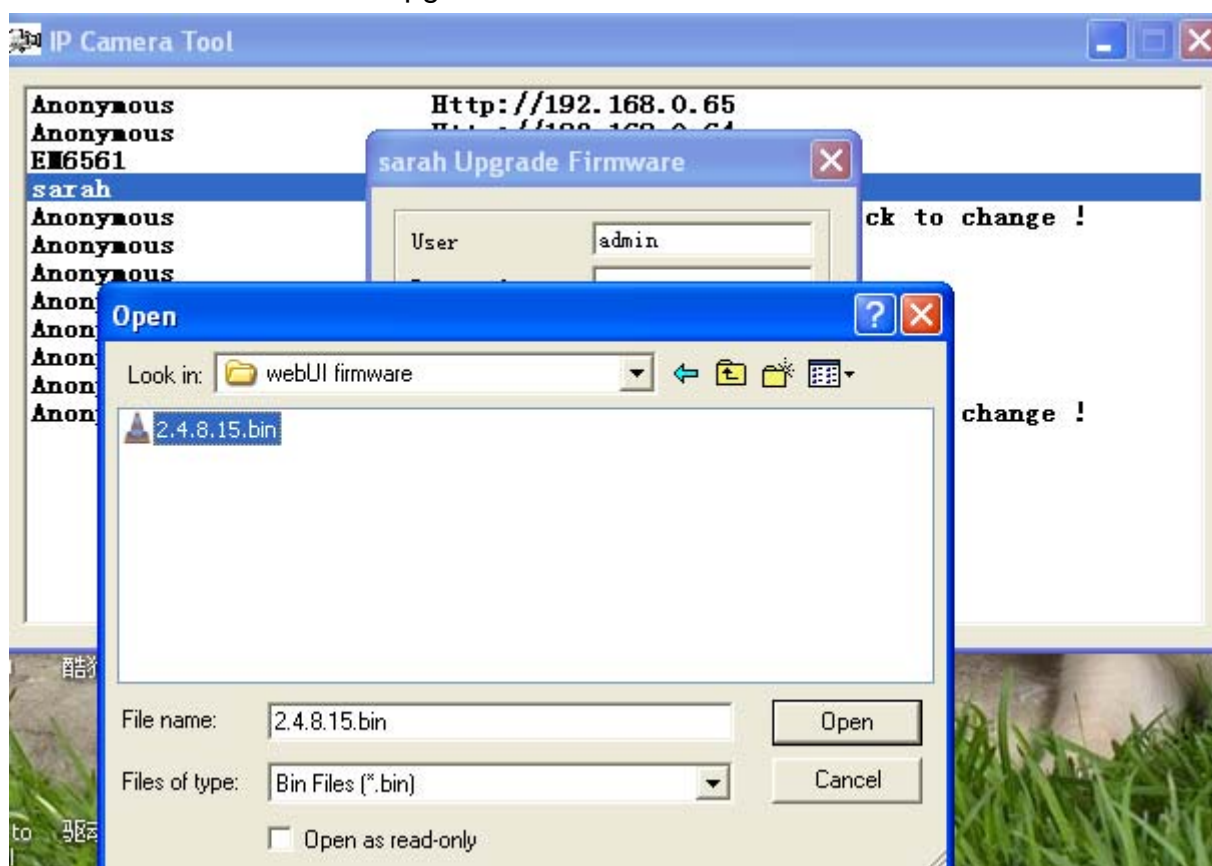


Figure 1.7

Do not unplug the power during upgrade.

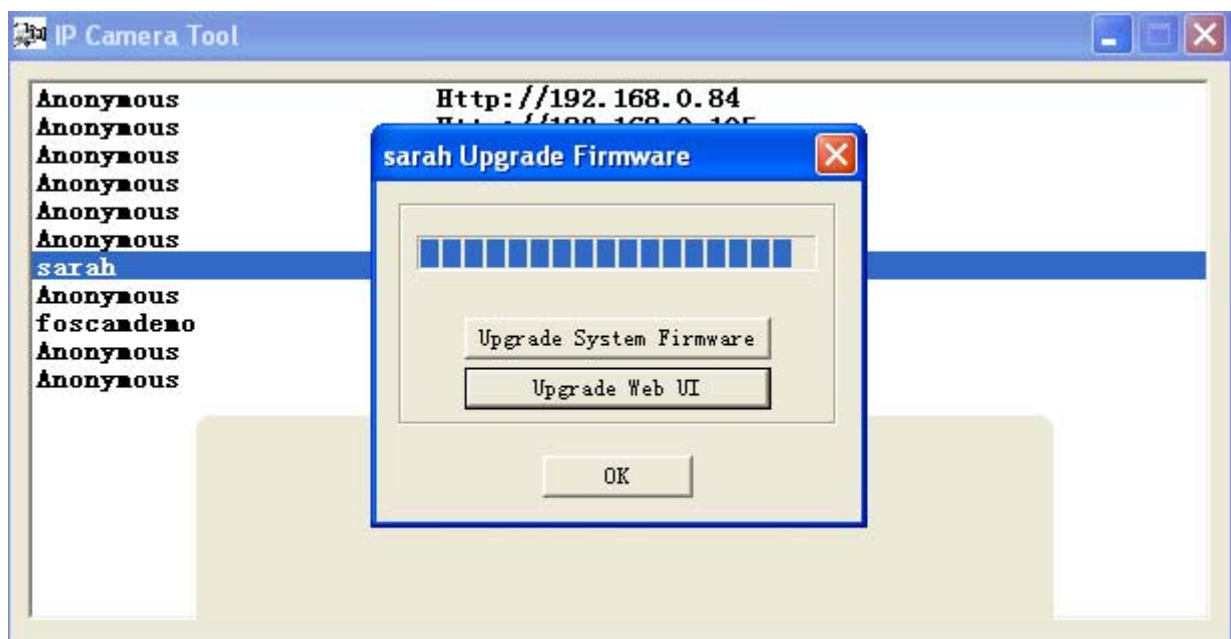


Figure 1.8



Figure 1.9

After you upgrade both the system firmware and Web UI, please check if the upgrade is successful.

Click the right mouse on the ip address and choose "**Basic Properties**". Figure 2.0
Or enter the interface (for administrator) and check the Device Info. Figure 2.1

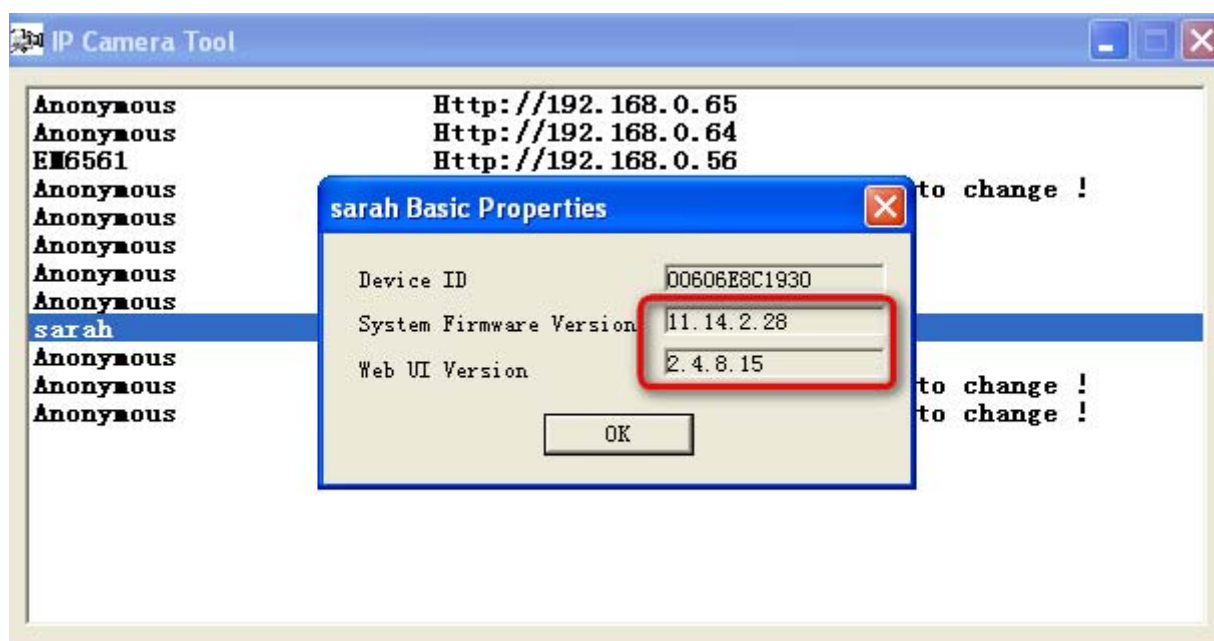


Figure 2.0

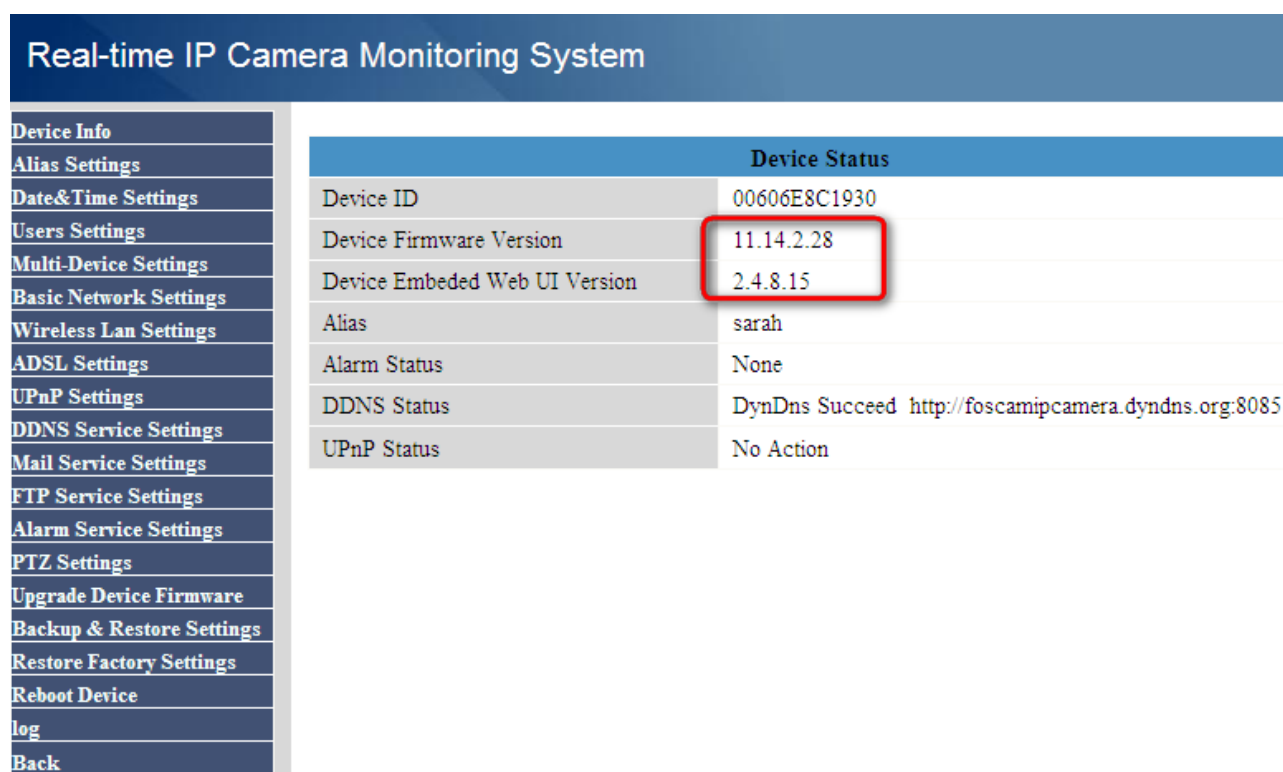


Figure 2.1

5、New feature of this firmware:

1) Add a button to control the folder which used to store recording pop up or not.

The camera will record automatically when motion trigger and store the recording in the folder you set. If you would not want the folder pop up always and disturb you. Click the button, the folder will not pop up when motion trigger. Click it again the folder will pop up when motion trigger. (Figure 2.2)

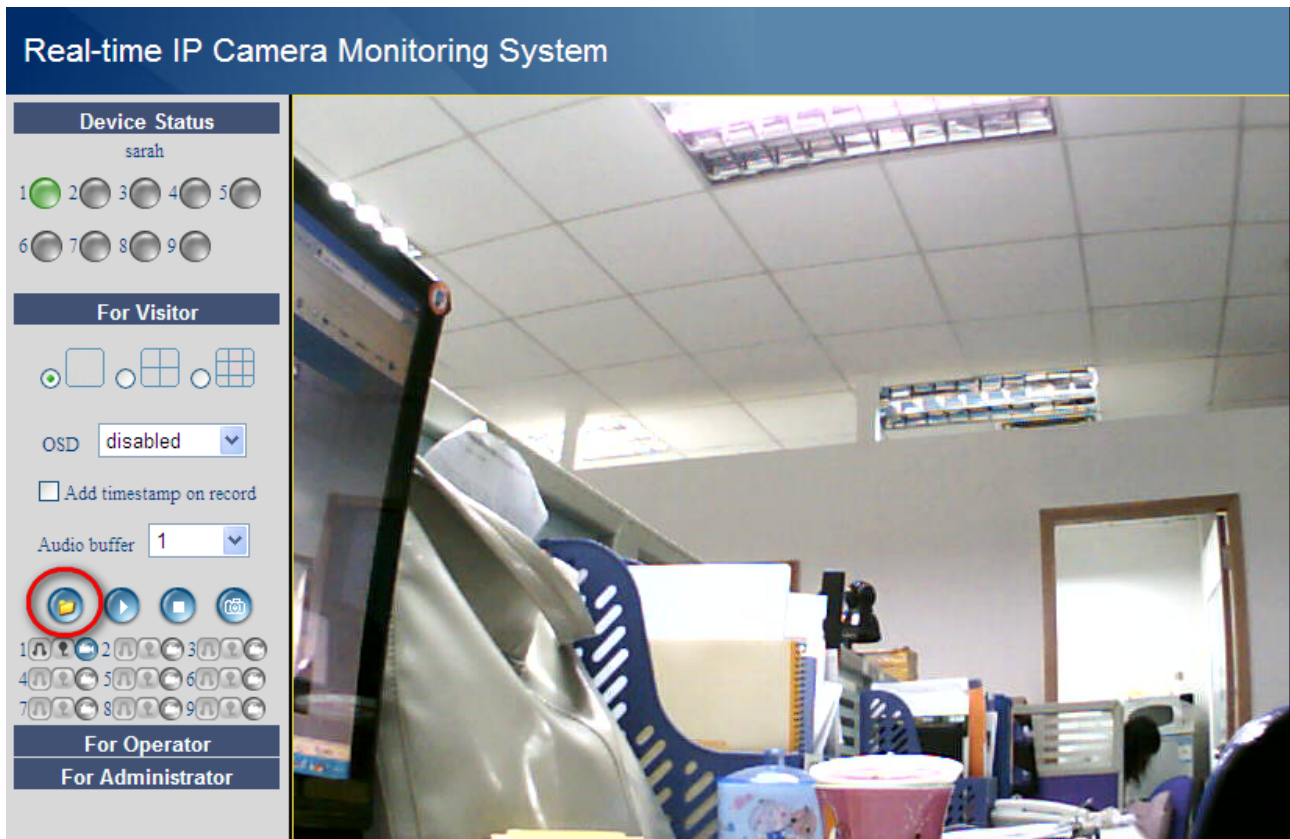


Figure 2.2

2) The new firmware has the option of set preset positions.

Rotate the camera to a position, then choose a number to preset, click **set**. (Figure 2.3) The position will be memorised by the camera. If you want to move the camera to that position next time, just choose the number and click **go**. The camera will go to that position you set. You can set several position.

In the PTZ settings page, unselect **preset_disable** and click submit will active the preset. (Figure 2.4) Please reboot the camera after you click submit to active the function.

Note: Enable preset and disable preset should reboot the camera, the function only can be enabled after reboot the device.



Figure 2.3

PTZ Settings	
preset_disable	<input type="checkbox"/> Don't choose here
PT speed	5 ▼
Upward patrol speed	5 ▼
Downward patrol speed	5 ▼
Leftward patrol speed	2 ▼
Rightward patrol speed	5 ▼
<input type="button" value="Submit"/> <input type="button" value="Refresh"/>	

Figure 2.4

3) Disable preset and let camera pan/tilt after power on.

If you want to disable preset, please choose **preset_disable**. The camera will rotate and stop in the center after power on or reboot (Figure 2.5). If you disable preset, the option **Go center on boot** will be selected at the same time. If not, please choose **Go center on boot** manually. Don't forget to click **Submit** after these settings.

PTZ Settings	
preset_disable	<input checked="" type="checkbox"/>
Go center on boot	<input checked="" type="checkbox"/>
PT speed	5 ▾
Upward patrol speed	5 ▾
Downward patrol speed	5 ▾
Leftward patrol speed	2 ▾
Rightward patrol speed	5 ▾
<input type="button" value="Submit"/> <input type="button" value="Refresh"/>	

Figure 2.5

4) Disable preset but not let camera pan/tilt after power on.

If you would not like the camera rotate after power on, please unselect **Go to center on boot**. Then click **Submit**. (Figure 2.6) The camera will not rotate after power on or reboot.

PTZ Settings	
preset_disable	<input checked="" type="checkbox"/>
Go center on boot	<input type="checkbox"/>
PT speed	5 ▾
Upward patrol speed	5 ▾
Downward patrol speed	5 ▾
Leftward patrol speed	2 ▾
Rightward patrol speed	5 ▾
<input type="button" value="Submit"/> <input type="button" value="Refresh"/>	

Figure 2.6

PS:

Our engineers only add the preset function in Internet Explorer currently, so if you use firefox, safari, google chrome browser, it is impossible to use this function. They will add the preset function to these browser in future software.

END